




TEXTRON WILDCAT XX TRUNK INSTALLATION

TOOLS REQUIRED	
5/16 drill bit	1/2" Wrench or socket
Square	7/16" Wrench or socket
Straight Edge or 4 ft. Level	Tape Measure

STEPS	INSTRUCTIONS
1	Starting on the front straight edge of box, find center line and mark underneath the lips edge 

TEXTRON WILDCAT XX TRUNK INSTALLATION

2

Using the bottom edge, mark $\frac{3}{4}$ " down



From center line mark 11" on both sides



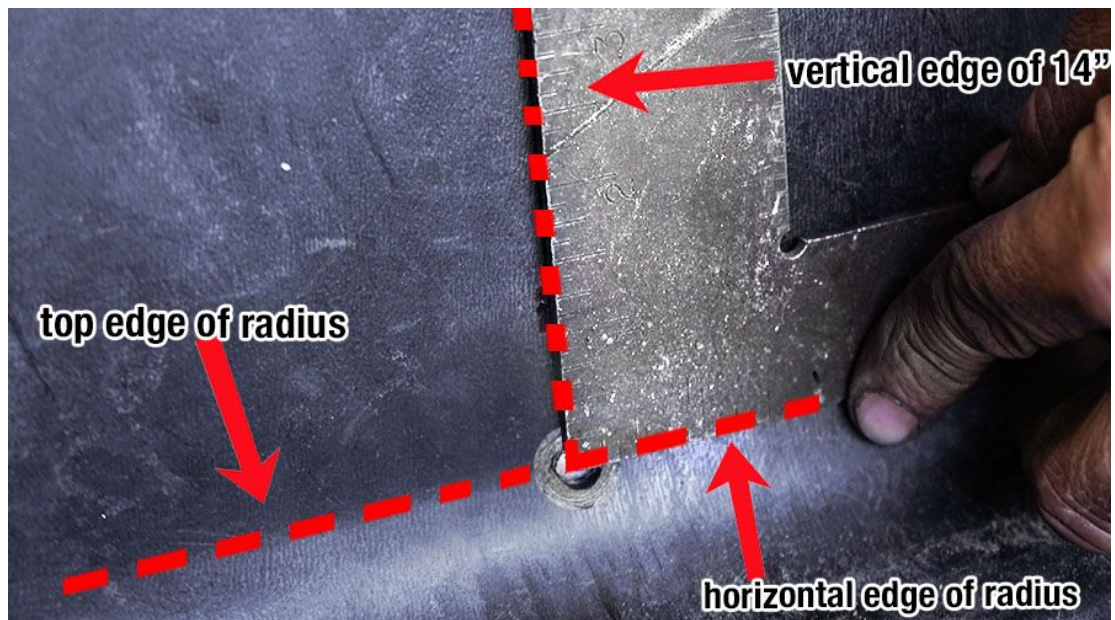
Then drill three $\frac{5}{16}$ " holes on front edge

TEXTRON WILDCAT XX TRUNK INSTALLATION

- 3** Using a straight edge, measure 14" from front face of straight edge to backside of the existing beds edge. Make sure to indicate 14" from driver and passenger side



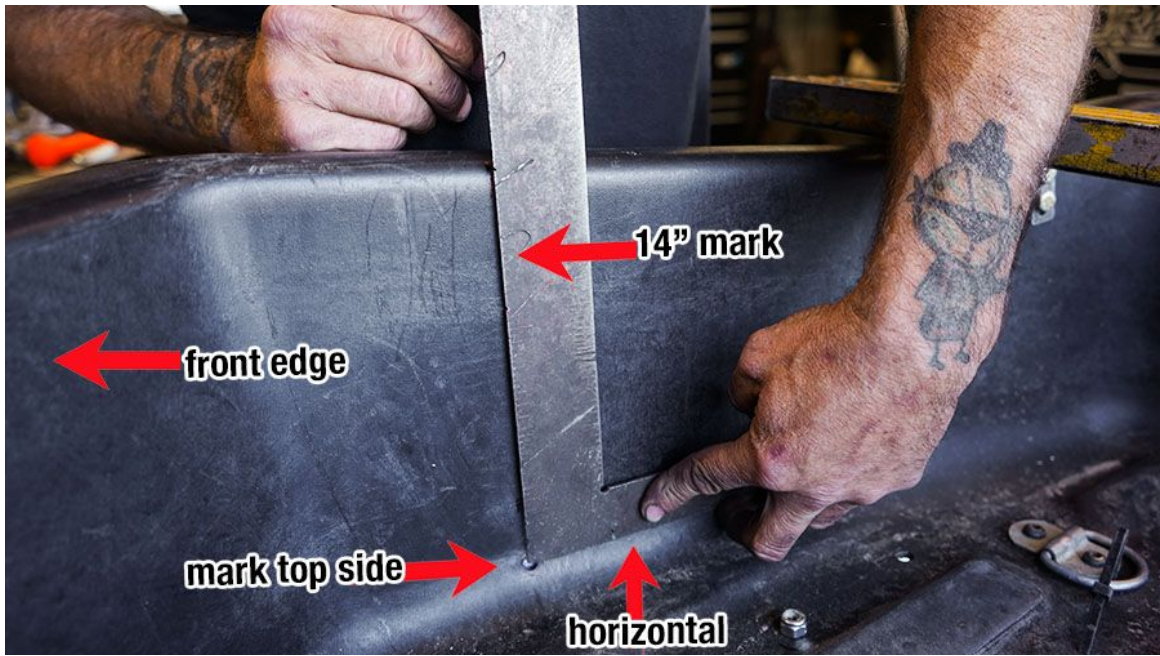
- 4** From the 14" indication mark, use a 90 degree square to measure the bottom edge of the square along the top edge of radius.





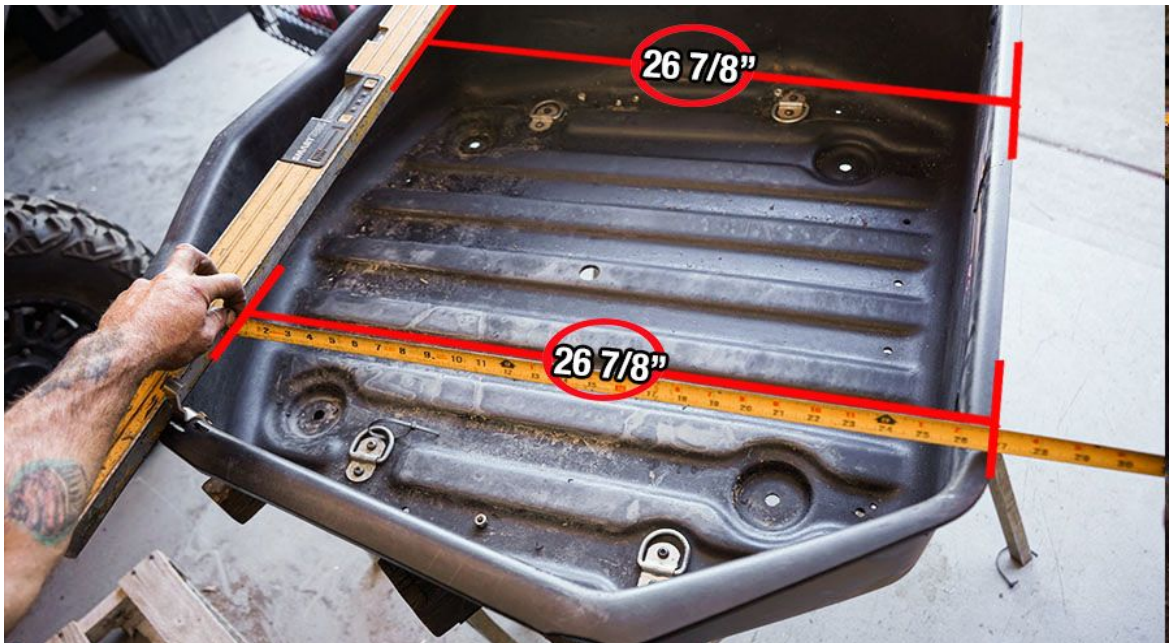
TEXTRON WILDCAT XX TRUNK INSTALLATION

Once the vertical edge is lined up with the 14" mark, align the horizontal edge with top side of edge on radius. Then mark and drill 5/16 hole, this will be for the lower gas shock



5

Using the same front edge as before mark $26 \frac{7}{8}$ " using a straight edge on driver and passenger side

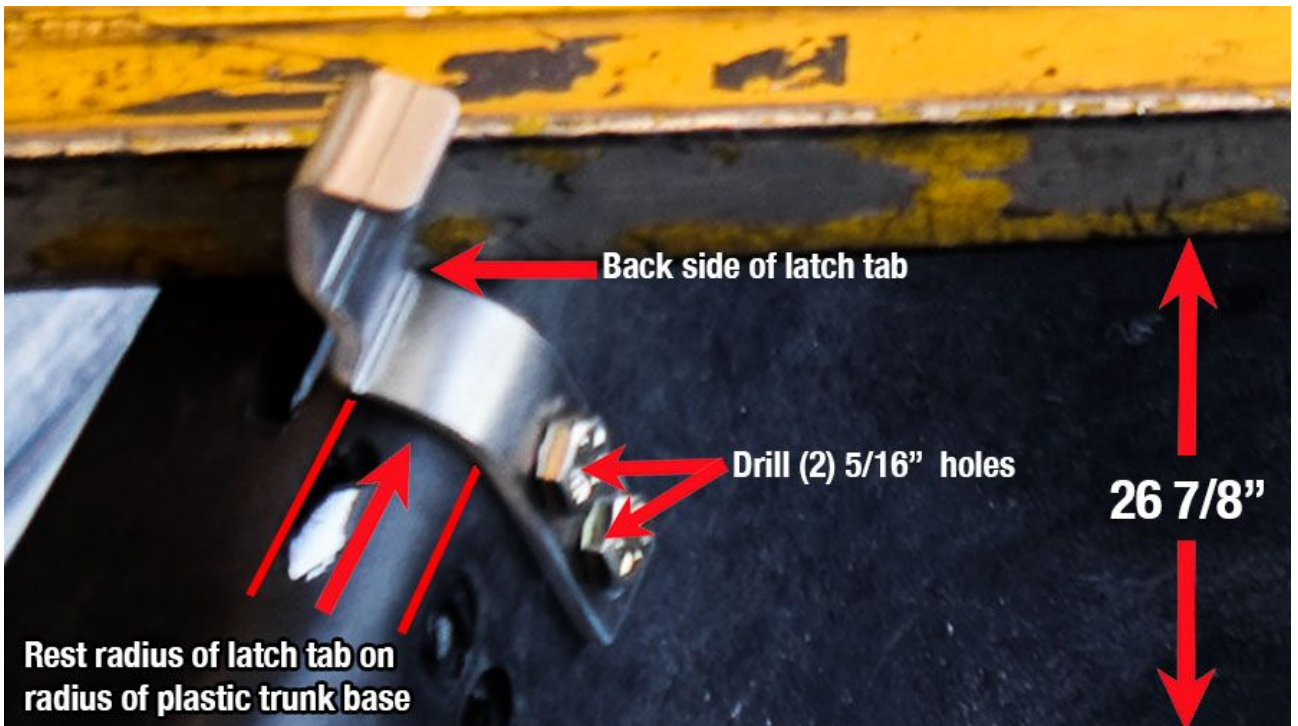




TEXTRON WILDCAT XX TRUNK INSTALLATION

6

Using supplied latch tabs, set edge of tab at $26 \frac{7}{8}$ mark.
Drill two $\frac{5}{16}$ " holes in the upper part of the slotter holes of the tab on driver and passenger side of trunk base.





TEXTRON WILDCAT XX TRUNK INSTALLATION

7

Mount gas shock to hood for support while installing bolts into rear hinge using 1/2" wrench



8

Install lower part of gas shock to trunk base





TEXTRON WILDCAT XX TRUNK INSTALLATION

9

Install 1/4" bolts in hinge bracket with supplied hardware



10

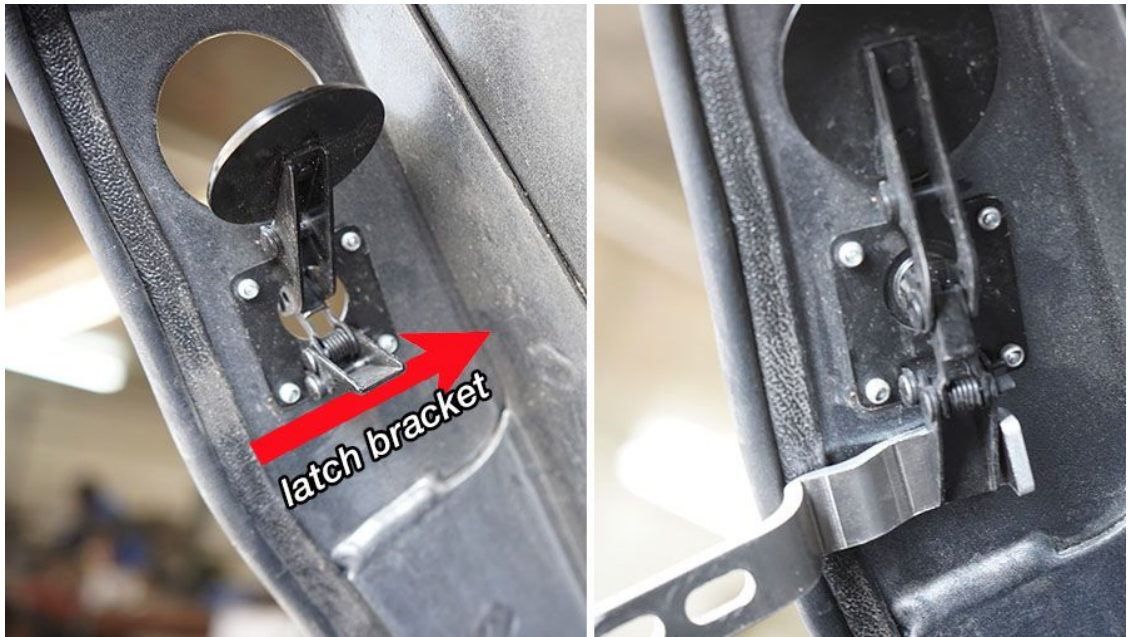
Tighten all hardware on hood but leave the bracket semi-loose



TEXTRON WILDCAT XX TRUNK INSTALLATION

11

Make sure both latch mechanisms are in the open position, then slowly bring hood down to insure that the latch bracket clears the latch mechanism.



TEXTRON WILDCAT XX TRUNK INSTALLATION

12

Once you find the desired position, tighten the latch tab hardware





TEXTRON WILDCAT XX TRUNK INSTALLATION

13

It is optional to clearance the inner front plastics of the trunk area on the vehicle. Find center and then measure 11" in both directions, mark these positions, using a barrel sander to give clearance for hardware 1" wide x 1/2" in depth.



14

On both back corners of trunk, measure 4.5" forward





TEXTRON WILDCAT XX TRUNK INSTALLATION

15

Trunk is now ready to be installed back into vehicle

